

# MIRROR GLASS REPLACEMENT INSTRUCTIONS

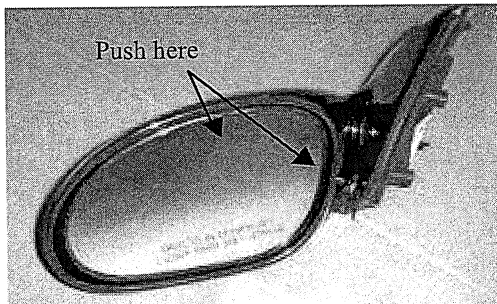
## CAUTION

Wear gloves and eye protection in case of broken glass.

## **WARNING**

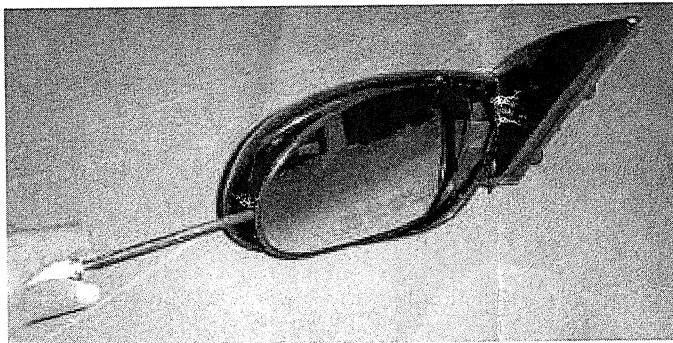
Pulling directly on the glass will result in serious damage to the motor assembly.

1. Adjust glass to fully inboard, fully upward position.

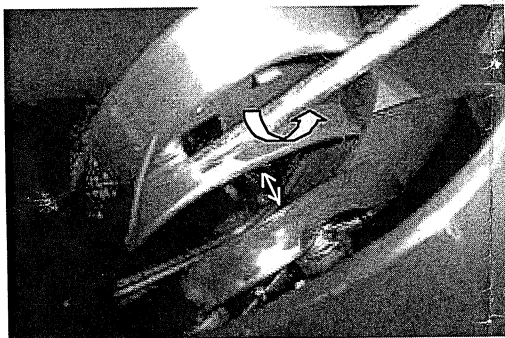


**NOTE** – Mirror shape may vary from pictures. Instructions cover several mirror styles.

2. Push a large flat screwdriver behind the glass and through the small window (at about 7 O'Clock) in the backing plate. The screwdriver should be tightly wedged up against the back of the glass. (see the picture under step 3)



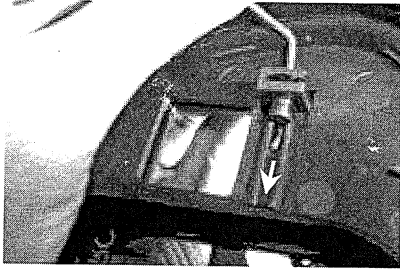
3. Twist the screwdriver to lever the glass from the motor assembly.



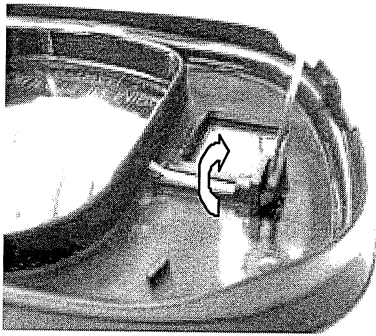
4. Remove spring wire taped to rear surface of new backing plate.

# MIRROR GLASS REPLACEMENT INSTRUCTIONS

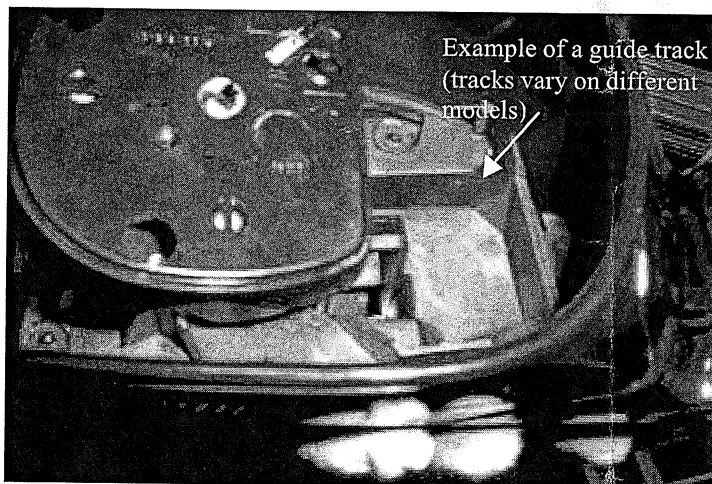
5. Install spring wire into rear housing on rear of backing plate by inserting wire through port.



6. Engage the wire into the detent window by folding upwards.



7. Locate new glass over mirror housing. Ensure the spring wire is positioned correctly in its guide track on the housing.



8. Cover glass with a cloth and apply even pressure to locate it.
9. Adjust the mirror manually to check the spring wire is correctly positioned. There should be a clicking sound during manual adjustment
10. Check the electrical adjustment of the glass using the vehicle controls.